

Welcome!



UTM JOHOR BAHRU

UTM KUALA LUMPUR



**UTM JOHOR
BAHRU CAMPUS**
(1,148 hectares)



OUR PROUD LANDMARK IN JOHOR BAHRU

**UTM KUALA LUMPUR
CAMPUS**
(35 hectares)



OUR PROUD LANDMARK IN KUALA LUMPUR



PHILOSOPHY

The divine law of Allah is the foundation for science and technology. UTM strives with total and unified effort to attain excellence in science and technology for universal peace and prosperity in accordance with His will.



VISION

To be recognised as a world class centre of academic and technological excellence.

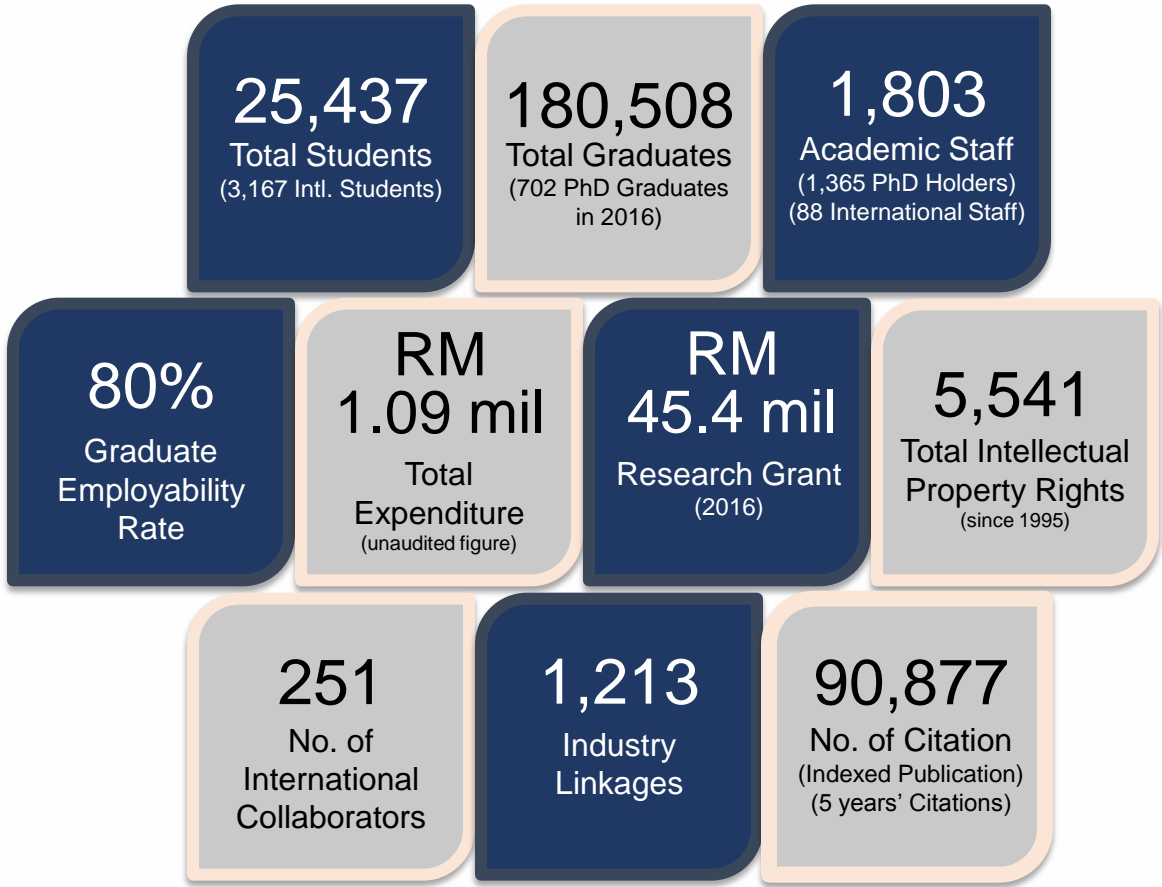


MISSION

To be a leader in the development of human capital and innovative technologies that will contribute to the nation's wealth creation.

innovative • entrepreneurial • global

UTM in Numbers



WHERE IS SEKOLAH PENGAJIAN SISWAZAH

SCHOOL OF GRADUATE STUDIES (SPS)
F54, UTM JOHOR BAHRU
Tel : 07- 5537893
Fax: 07- 5537592
Email: graduate@utm.my



SCHOOL OF GRADUATE STUDIES
(SPS Kuala Lumpur)
Level 8, Menara Razak
UTM Kuala Lumpur
Tel: 03 21805188
Fax: 03-21805188



Admission Requirements for Postgraduate Student UTM

postgrad



Master's Degree

- A Bachelor's Degree with good honours from Universiti Teknologi Malaysia or any other institution of higher learning recognised by the Senate; or
- A qualification equivalent to a Bachelor's Degree and experience in the relevant field recognised by the Senate.

English Requirement

- Students must have a valid two-year **TOEFL certificate with PBT score of 600** or above (IBT/CBT equivalent) or **IELTS Band 7** or CIEP equivalent as a pre-requisite for **Teaching English as a Second Language (TESL)** programme.
- Applicants who do not meet the English proficiency requirements of their chosen programme at Universiti Teknologi Malaysia (UTM) can improve their English at Intensive English Programme (IEP) at Language Academy, UTM or CIEP at ELS Language Centers in Malaysia. **UTM accepts IELTS Level 5.5 and above upon completion of IEP conducted by Language Academy, UTM or ELS English Certificate (level 107) as an ENGLISH LANGUAGE ENTRY REQUIREMENTS FOR INTERNATIONAL STUDENTS.** Students who choose to attend IEP (Language Academy, UTM) must attain IELTS 5.5 or attend ELS and must pass the required English course(s) before starting their programmes in UTM.
- For more information about the [Intensive English Programme \(IEP\)](http://languageacademy.utm.my/intensive-English-programme-iep/) <http://languageacademy.utm.my/intensive-English-programme-iep/> **Certified Intensive English Programme (ELS CIEP)**: www.els.edu.my/utmadmission

English Requirement

IELTS/TOEFL SCORE	ELS CIEP LEVEL 108 & 109	CODE	UTM ENGLISH LANGUAGE REQUIREMENTS (INTERNATIONAL POSTGRADUATE STUDENTS)
IELTS ≥ Band 6.0 TOEFL ≥ 550 TOEFL (IBT) ≥ 79	ELS CIEP LEVEL 108 & 109	A	Students can enroll at Faculty
IELTS = Band 5.5 525 ≤ TOEFL < 550 69 ≤ TOEFL IBT < 79 + English Course Certificate (equivalent to 120 hrs of Intermediate English)		A	Students can enroll at Faculty
IELTS = Band 5.5 525 ≤ TOEFL < 550 69 ≤ TOEFL IBT < 79	ELS CIEP Level 107 (*New)	A1	Students can enroll at Faculty and simultaneously attend and pass English for Postgraduate Programme (EPG) conducted by Language Academy in UTM
IELTS ≤ Band 5.0 TOEFL < 525 TOEFL IBT < 69		D IEP D1 ELS	Students are required to attend either: 1.Intensive English Programme(IEP) conducted by Language Academy (LA), UTM and pass IELTS with a minimum of 5.5 OR 2.Certified Intensive English Programme (CIEP) conducted by ELS Language Centre and pass level 107 or higher.

Please refer to <http://admission.utm.my/english-language-requirements/> for further information.

Link for Brosur : [ENGLISH BROCHURE](#)

FEES FOR MASTER OF SCIENCE (SHIP AND OFFSHORE ENGINEERING)

MASTER OF SCIENCE (SHIP AND OFFSHORE ENGINEERING) (Course Work)	International (4 Semesters)	International (Mainstream) Effective : Semester II, 2018/2019 Session
Semester 1	MYR 9,000.00	MYR 9,929.00
Semester 2	MYR 9,000.00	MYR 8,623.00
Semester 3	MYR 9,000.00	MYR 8,623.00
Semester 4	MYR 9,000.00	MYR 8,623.00
Total	MYR 36,000.00	MYR 35,795.00

*Subject to change by University Senate

PROGRAMMES OFFERED

- ❑ **MASTER'S DEGREE AWARD**
 - M.Eng / M.Sc / M.Ed / M.Mgt / M.Arch / MBA
 - By Taught Course/ Mix Mode/ Full Research
 - Duration: Minimum of 1 year (Full Time)
- ❑ **DOCTORAL DEGREES AWARD:**
 - PhD / Eng. Doctorate
 - Full Research Study / Taught Course & Research
 - Duration: Minimum of 3 years (Full Time)

MODE OF PROGRAMMES

- ❑ **MASTER'S DEGREE BY TAUGHT COURSE**
 - Courses and Master's project
 - Minimum 40 credit-hours of taught subjects
 - Minimum 2 semesters (1 Year)
- ❑ **TAUGHT COURSE AND RESEARCH**
 - Courses and Master /Doctoral dissertation
- ❑ **FULL RESEARCH**
 - Thesis and oral examination at end of study

NEED TO KNOW !

UTM RESPONSIBLE OFFICE

LOCATIONS for UTMJB

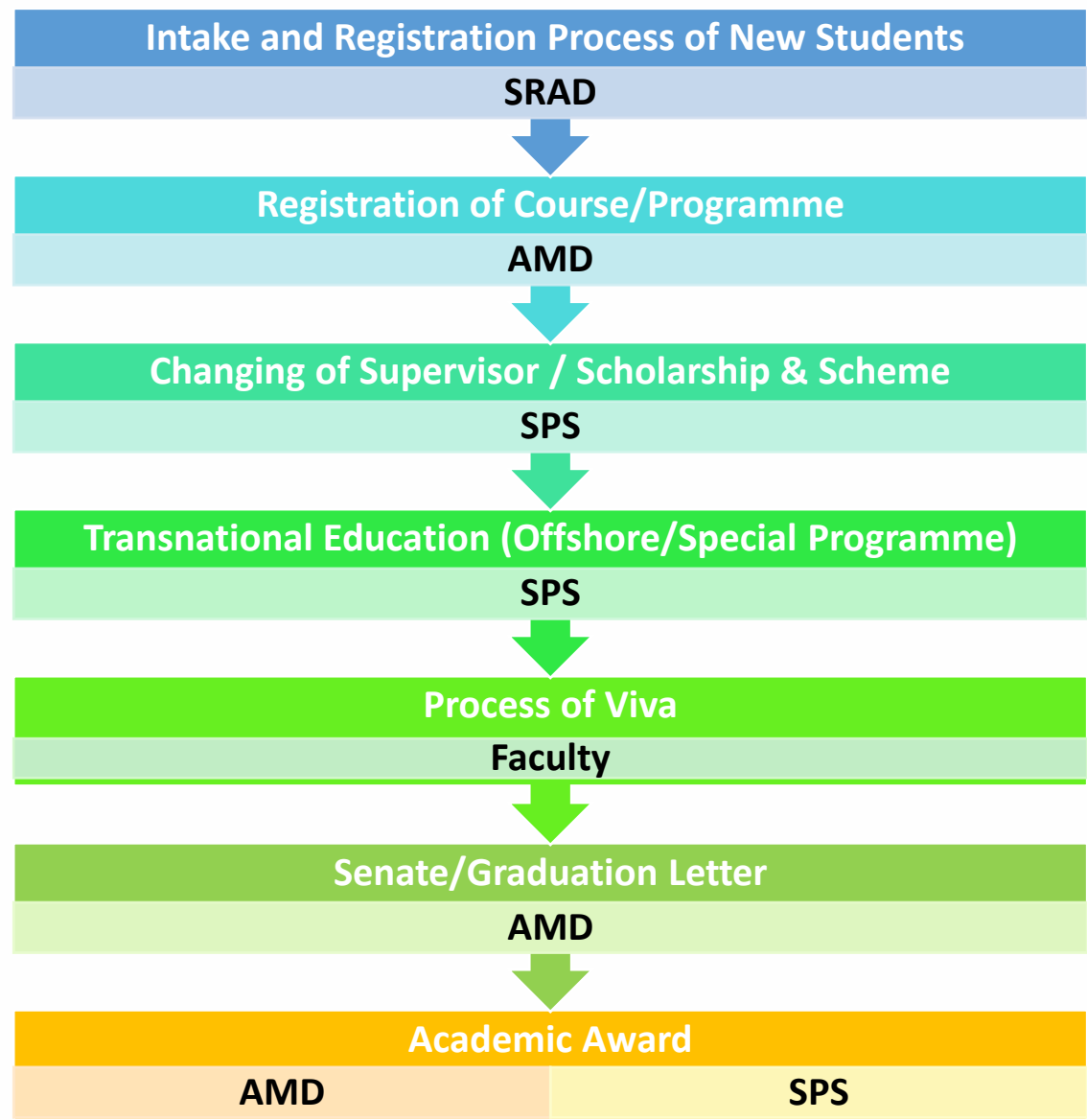
SPS:
(School of Graduate Studies)
Level 2, Wing B, Block F54, UTM Johor Bahru

SRAD:
(Student Recruitment & Admission Division)
Level 2, Wing A, Block F54, UTM Johor Bahru

AMD:
(Academic Management Division)
Ground Floor, Wing A, Block F54, UTM Johor Bahru

LOCATIONS for UTMKL

SPS,SRAD & AMD
Level 8, Razak Tower,
UTM Kuala Lumpur



Apply online at
admission.utm.my



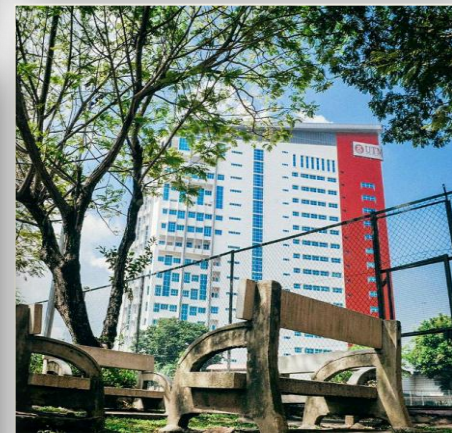
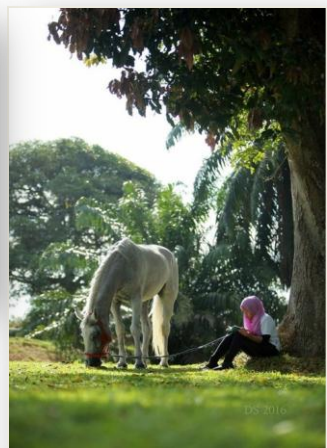
- Upload the following supporting documents (not more than 10 MB per file in pdf/jpeg/words file).
- Certificate(s) & Transcript(s)
 - Passport size photograph
 - IC/Passport copy
 - Processing fee slip (Internet Banking /Cash Deposit/Electronic Funds Transfer): MYR60 (Malaysian), MYR217/USD50 (Non-Malaysian)
 - Research Proposal (Research Application only)
 - Approval letter from your proposed supervisor (Research Application only if any)
 - Proof of working experience (if any)
 - TOEFL certificate(Non-Malaysian)



APPLY NOW!

Processing fee :
50USD / RM 220

<http://smart.utm.my/admission/>



BEST UNIVERSITIES IN ASEAN

1	NANYANG TECHNOLOGICAL UNIVERSITY
2	NATIONAL UNIVERSITY OF SINGAPORE (NUS)
3	UNIVERSITI MALAYSIA
4	UNIVERSITI PUTRA MALAYSIA
5	UNIVERSITI KEBANGSAAN MALAYSIA
6	CHULALONGKORN UNIVERSITY
7	UNIVERSITI TEKNOLOGI MALAYSIA
8	UNIVERSITI SAINS MALAYSIA

WORLD UNIVERSITY BANKING 2017/2018

Thank You